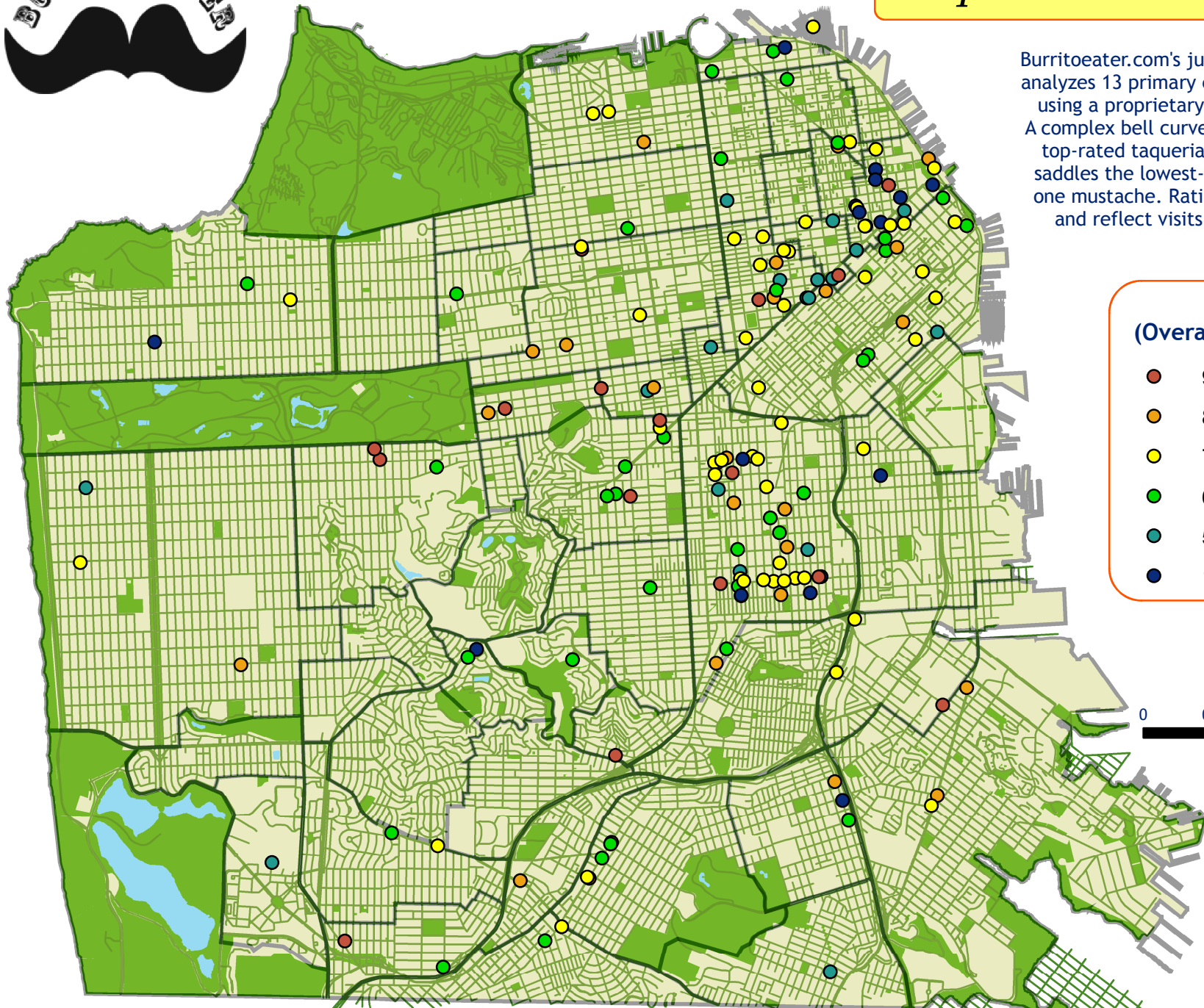




# Taquerias of San Francisco

Burrtoeater.com's judges panel rigorously analyzes 13 primary elements of a burrito using a proprietary 10-Mustache Scale. A complex bell curve formula awards the top-rated taqueria 10 mustaches, and saddles the lowest-rated taqueria with one mustache. Ratings are cumulative, and reflect visits made since 2003.



## OMR (Overall Mustache Rating)

- 9.00 - 9.99 Exceptional
- 8.50 - 8.99 Mighty Fine
- 7.50 - 8.49 Good
- 6.50 - 7.49 Mediocre
- 5.50 - 6.49 DisgrunTLing
- 1.00 - 5.49 Grim



OMR data updated  
January 17, 2007.

Sources: Burrtoeater.com  
(taqueria and OMR data);  
City and County of San  
Francisco (base map  
elements); Jamie Racanelli  
(complex bell curve formula).